

next
sight

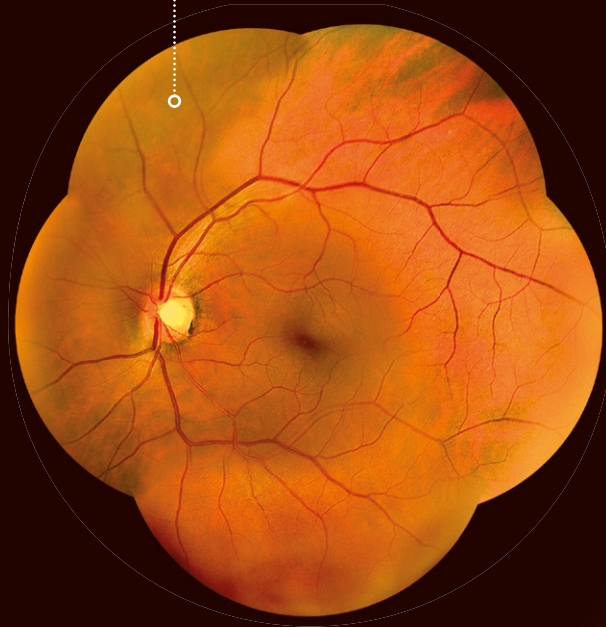
n e x y
A look ahead

n e x y

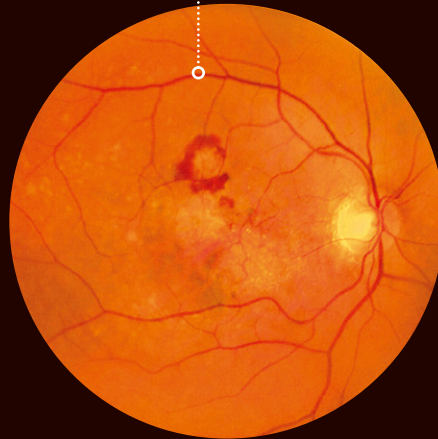
> Color image of a patient with maculopathy, central chorioretinal atrophy.



> Mosaic of a patient within the normal limits.



> Color image of a patient with maculopathy, hemorrhages at the posterior pole.

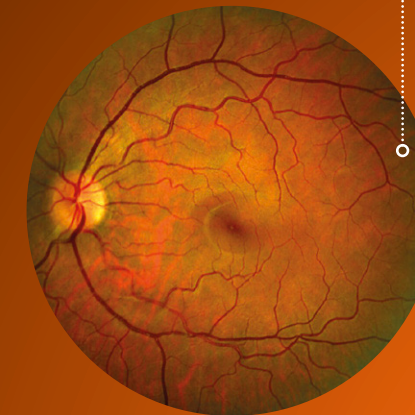


> Color image of a patient within the normal limits.



> The difference is plain to see.

> Color image of a patient within the normal limits.



> Special
at first sight



HARDWARE SPECIFICATIONS

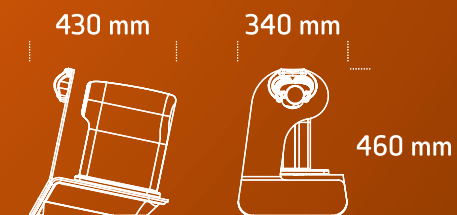
FIELD OF VIEW	45°
FIELD OF VIEW WITH MOSAIC FUNCTION	90°
RETINAL RESOLUTION	14 μ m
FIXATIONS	7 fixations set-ups
TABLET DIMENSIONS	10.4"

SOFTWARE SPECIFICATIONS

- ✓ RED FREE FILTER
- ✓ DEEP LAYER FILTER
- ✓ AUTOMATIC MOSAIC FUNCTION
- ✓ SHARED FOLDER
- ✓ COMPATIBLE WITH STANDARD DICOM

TELEMEDICINE PLATFORM

- ✓ CLOUD-BASED SECURE
- ✓ DATA ENCRYPTION BY CLIENT-SIDE
- ✓ AUTOMATIC DATABASE BACKUP
- ✓ DATA CONSULTATION FROM FRONT-END WEB
- ✓ MULTILEVEL ACCOUNT ACCESS BY PERSONAL USER



NEXY: THE NEXT GENERATION CAMERA



ROBOTIC HIGH QUALITY RETINAL IMAGING

Crystal clear images are captured easily with an advanced robotic movement. Thanks to nexy's innovative and unique optical design, you can capture high quality and detailed images of the fundus even for patients with opacities.



FULLY AUTOMATED AND OPERATOR FREE

This fully automated camera uses auto focus and auto capture. Just press Start and nexy does the rest. Nexy can capture non-mydratic images of the fundus oculi with 45° field-of-view angle in less than 15 seconds, requiring no human intervention for mechanical operations.



CLOUD- BASED AND SECURE

The data are transferred to the cloud securely and can be accessed by authorized licensed specialist within seconds. Nexy utilizes client-side encryption for maximum data protection. This guarantees data security against:

- > Unauthorized access to patient personal details.
- > Fraudulent actions from hackers that try to access the database.



OPTIMIZED FOR TELEMEDICINE AND A.I. ASSISTED EVALUATION

Nexy can transmit captured digital images to the server along with patient's medical history. From there, a specialist can view retinal images and prepare a medical report. Otherwise, if nexy is associated to A.I. software, a preventive screening of the received data will be effected.

The unique features of nexy make it an ideal and efficient solution for teleconsultation.

TELEMEDICINE MADE EASY WITH NEXY!

New advancements in innovative diagnostic devices and telecommunication technology have made it possible to utilize telemedicine as a platform to improve access to quality healthcare.

Teleophthalmology is a branch of telemedicine

and plays a major role in prevention of blindness and identification and control of major chronic diseases, such as, diabetes, hypertension, cardiovascular disease, some types of cancers and more.



STEP 1

Patient visits an healthcare provider, such as Optometrist, Primary Care, Mobile clinic or Hospital.



STEP 2

Nexy automatically captures retinal photos. No dilation is required.



STEP 3

Data is uploaded from the Nexy tablet on a secure cloud-based server.



STEP 4

Licensed specialist evaluates and interprets the results.

TELEMEDICINE PLATFORM INCLUDED



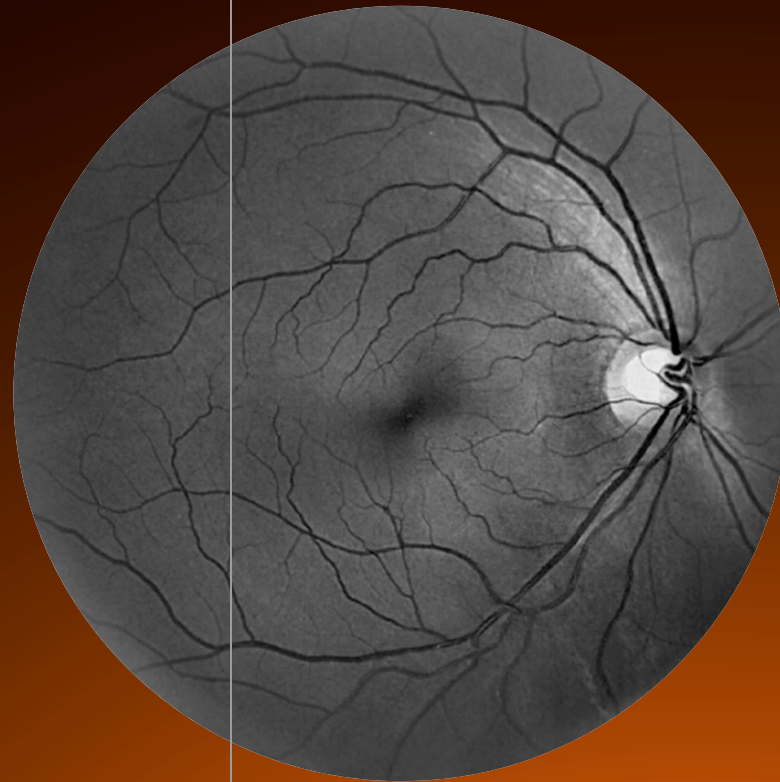
Nexy receives the results directly on the tablet.



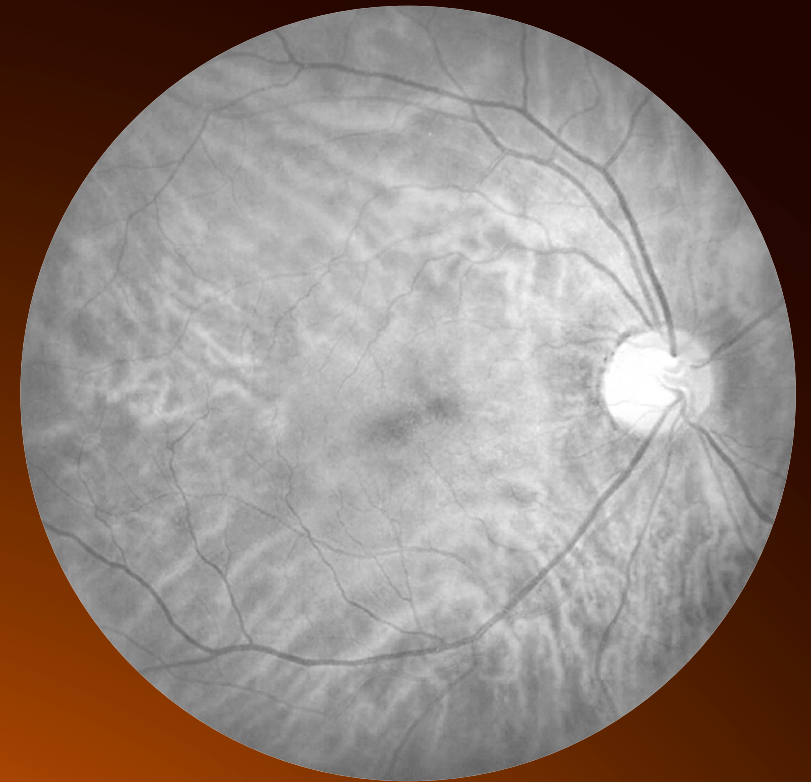
Results are sent back to the cloud based server.



Standard image



Red free filter



Deep layer filter

Next Sight srl

> Registered Office

Polo Tecnologico 'A. Galvani'
Via Roveredo, 20/B
33170 Pordenone - Italy
Tel. +39 0434 - 50 75 11

> Headquarters

Via IV Novembre, 6/E
35010 Limena (Padua) - Italy
Tel. +39 049 - 76 99 33

info@nextsight.info
www.nextsight.info